



BEIKOZINI RIDER

| | | | |
|--|---|---|--|
| LAST VERSION | 2020/10/17 | | |
| CONTACT VENUE / ARETOKO ARDURADUNAK | | | |
| | NAME | TELEPHONE | EMAIL |
| PROD & SOUND | Alberto Markuerkiaga | | |
| LIGHTS | | 619424974 | bulegoa@beikozini.com |
| STAGE | | | |
| DIMENSIONS | 7m x 5,5m x 1,5m | | width x depth x height. |
| CLEARANCE HEIGHT | 4,2 m | | |
| F.O.H / P.A. | | | |
| P.A. | JBL VENUE SERIES VS 3115 - 5000 W 3 WAYS | | |
| POWER AMPLIFIERS | | | |
| | 1 | CREST AUDIO PL 8001 LOW | |
| | 1 | CREST AUDIO PL 8001 MEDIUM | |
| | 1 | CREST AUDIO PL 4601 HIGH | |
| CROSSOVER | 1 | KLARK TEKNIK DN9848 4X8 | |
| CONSOLE F.O.H. | 1 | MIDAS PRO1 | 24 ANALOG MIC INPUTS+8 RETURN+16 digital+8ret |
| DIGITAL STAGE BOX | 1 | MIDAS DL 153 | 16 DIGITAL INPUTS+8 RETURN |
| CD/MP3 | 1 | NUMARK MP 102, Single- MP3 | |
| MONITORS | | | |
| POWER AMPLIFIERS | 2 | CREST AUDIO CA 6 Stereo Power 4Ohm: 600W | |
| | 2 | CROWN AUDIO 460 CSL Parallel-Mono:400 w | |
| WEDGES | 8 | NEXO PS 12 | |
| | 2 | DAS PF-015 300 W | |
| | 4 | JBL SERIE SRX SR 4702SX | |
| | 4 | JBL SERIE TR 225 450 Watts | |
| POWERED SPEAKERS | 5 | JBL EON 15 300 W | |
| MICROPHONES | | | |
| | 5 | SHURE SM 58 | |
| | 1 | SHURE BETA 58 | |
| | 1 | SHURE SM58 - UT 4 wireless | |
| | 1 | SENNHEISER E906 | |
| | 5 | SHURE SM 57 | |
| | 1 | SHURE BETA 57 | |
| | 2 | RODE NT5-MP condenser | |
| | 3 | AKG C- 1000-S condenser | |
| | 2 | SHURE BETA 52 | |
| | 4 | SENNHEISER e604 clamps microphones | |
| | 3 | D.I. BSS AR133, | |
| | 4 | BEHRINGER DI 100 ACTIVE | |
| | 1 | BEHRINGER DI 20 PRO ACTIVE 2-CH | |
| | 11 | STANDS TALL | |
| | 9 | STANDS SHORT | |
| | 2 | EW SENNHEISER 172 G3 wireless Band Headset | |
| | 3 | Sennheiser XSW 1- | ME3 E-Band Headset |
| VIDEO | | | |
| SCREEN | 1 | 6m x 4,5 m | |
| PROJECTOR | 1 | EPSON EB-G6350 7500 lumens | |

RISERS/TARIMAK

RISERS 4 **ROSCO 2m x 1m x 0,35 m**

LIGHTS

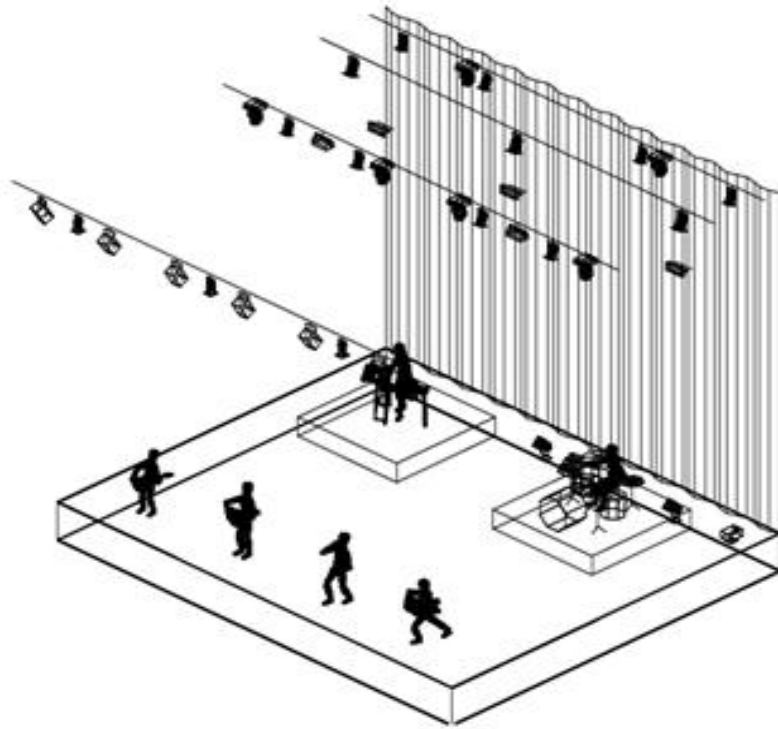
P.C. 6 **1000 W**
PAR 64 6
BLINDER 2 **BLINDER /ZEGADORAK 2 LAMPS**
PAR LED 11 **Stairville led par tricolor 24 x 3w**
MOBIL SPOT 6 **Showtec led phantom 50**
MOBIL SPOT 2 **Showtec major spot 60,**
STROBO 2 **1500 W**
HAZER 1 **Cameo Instant Hazer 1400 Pro**
CONSOLE 1 **Avolites Pearl 2010**

Foko guztiak montatuta daude eta ezin dira mugitu.

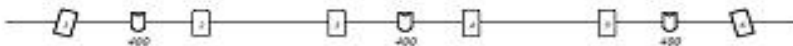
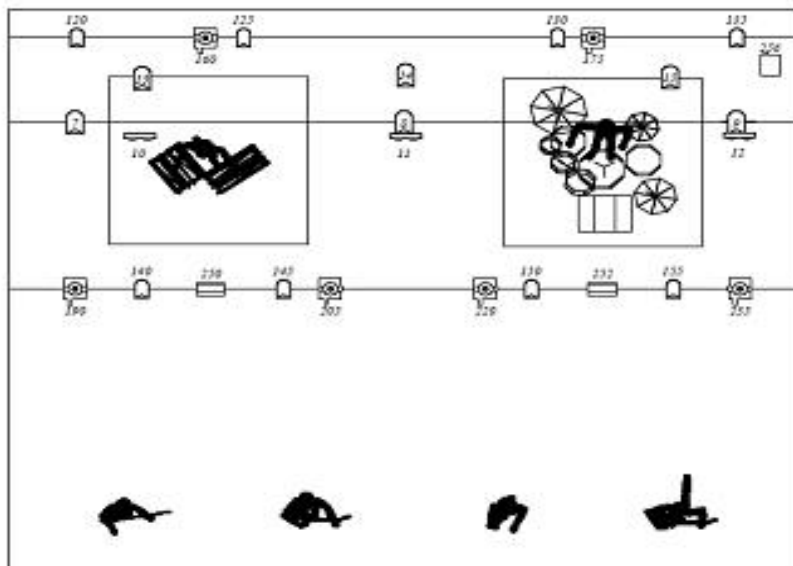
Plano fijo bat da, hala ere enfoke guztiak mugitu daitezke.

Todos los focos estan montados y no se pueden mover.

Es un plano fijo, se podran mover todos los enfoques.



PATCH



**Foko guztiak montatuta daude eta ezin dira mugitu.
Plano fijo bat da, hala ere enfoke guztiak mugitu daitezke.**

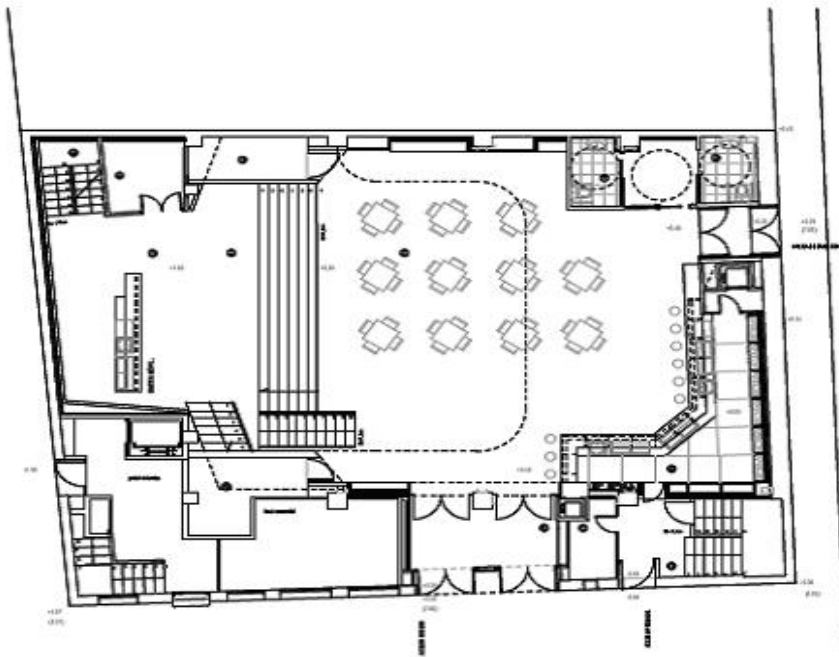
| | | | |
|--|--|--|--|
| | | | |
| | | | |
| | | | |
| | | | |
| | | | |



| | | | |
|--|--|--|--|
| | | | |
| | | | |
| | | | |



| | | | |
|--|--|--|--|
| | | | |
|--|--|--|--|



PLANTA BAJA

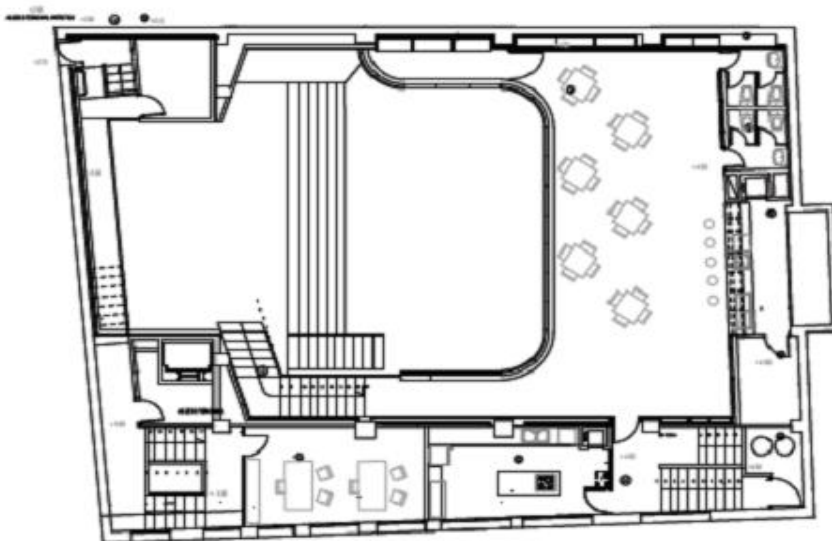
| | |
|-------------------------|----------------------|
| 1- ESCENARIO | 30,0 m ² |
| 2- AMPLIACION ESCENARIO | 27,0 m ² |
| 3- PLAZA | 121,5 m ² |
| 4- SERVIDO MENSUALDO | 12,5 m ² |
| 5- ALMACÉN | 4,2 m ² |
| 6- VESTIBULO | 18,8 m ² |
| 7- TABUCLA | 3,40 m ² |
| 8- BARRA | 31,2 m ² |
| 9- INSTALACIONES | 7,45 m ² |
| 10- ALMACÉN | 6,70 m ² |
| 11- CIRCULACION | 32,0 m ² |

TOTAL SUP. UTILES : 282,05 m²
 TOTAL SUP. CONSTRUIDAS : 327,05 m²

AGENCIA
 ARQUITECTA
ADO BISATUA



BEIKOZINI
 ONDARROA



PLANTA ALTA

| | |
|-------------------------|----------------------|
| 1- ESCENARIO | 30,0 m ² |
| 2- AMPLIACION ESCENARIO | 27,0 m ² |
| 3- PLAZA | 118,0 m ² |
| 4- SERVIDO MENSUALDO | 5,8 m ² |
| 5- ALMACÉN | 4,20 m ² |
| 6- VESTIBULO | 18,8 m ² |
| 7- TABUCLA | 3,40 m ² |
| 8- BARRA | 31,2 m ² |
| 9- INSTALACIONES | 7,45 m ² |
| 10- ALMACÉN | 6,70 m ² |
| 11- CIRCULACION | 32,0 m ² |

TOTAL SUP. UTILES : 302,05 m²
 TOTAL SUP. CONSTRUIDAS : 327,05 m²

AGENCIA
 ARQUITECTA
ADO BISATUA



BEIKOZINI
 ONDARROA